



National Evaluation Capacities For Development

4th International Conference on National Evaluation Capacities

Bangkok Thailand



EvalSDGs – a platform for advocacy, learning and innovation

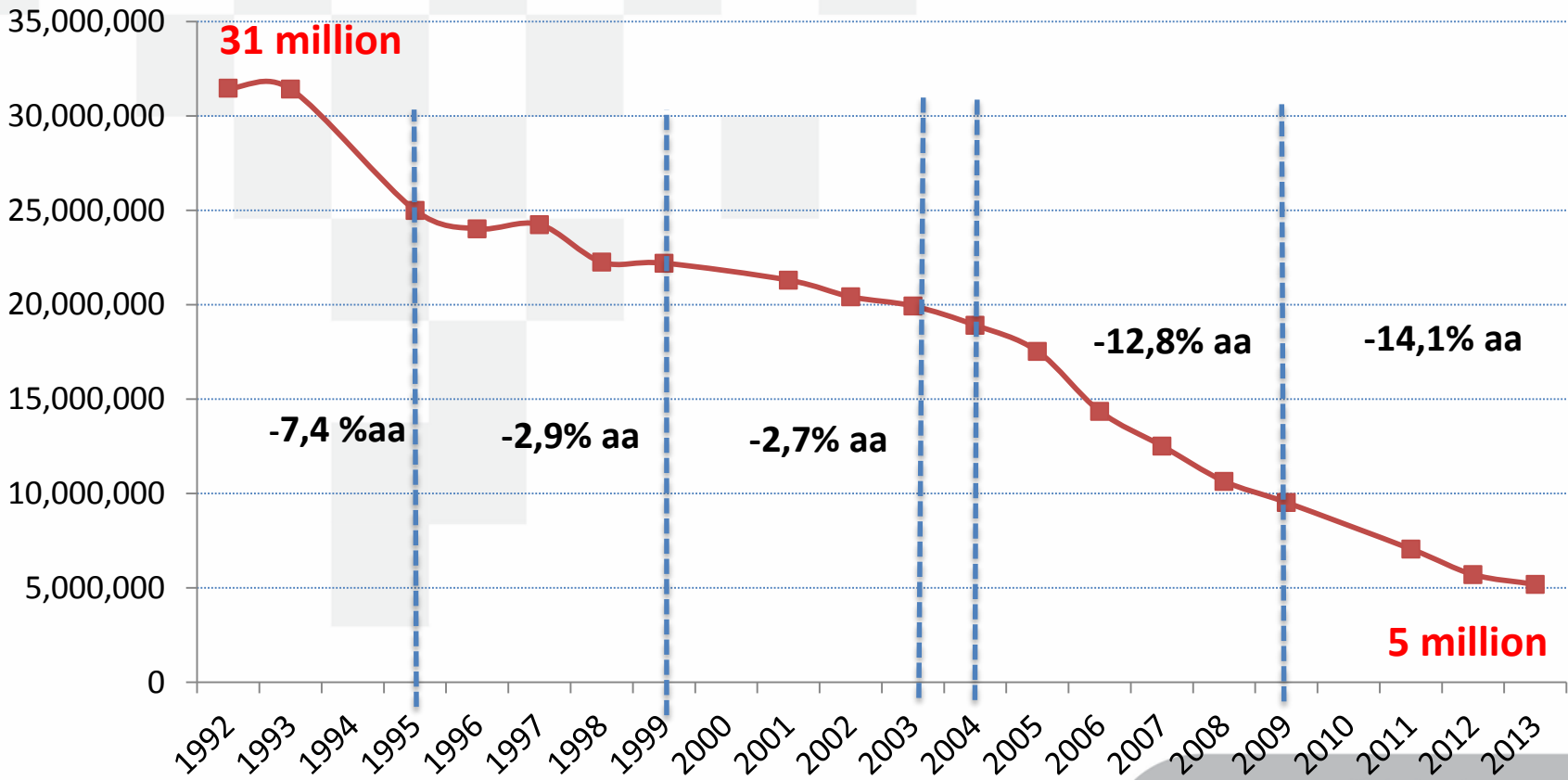
Paulo Jannuzzi

Secretariat of Evaluation and Information Management

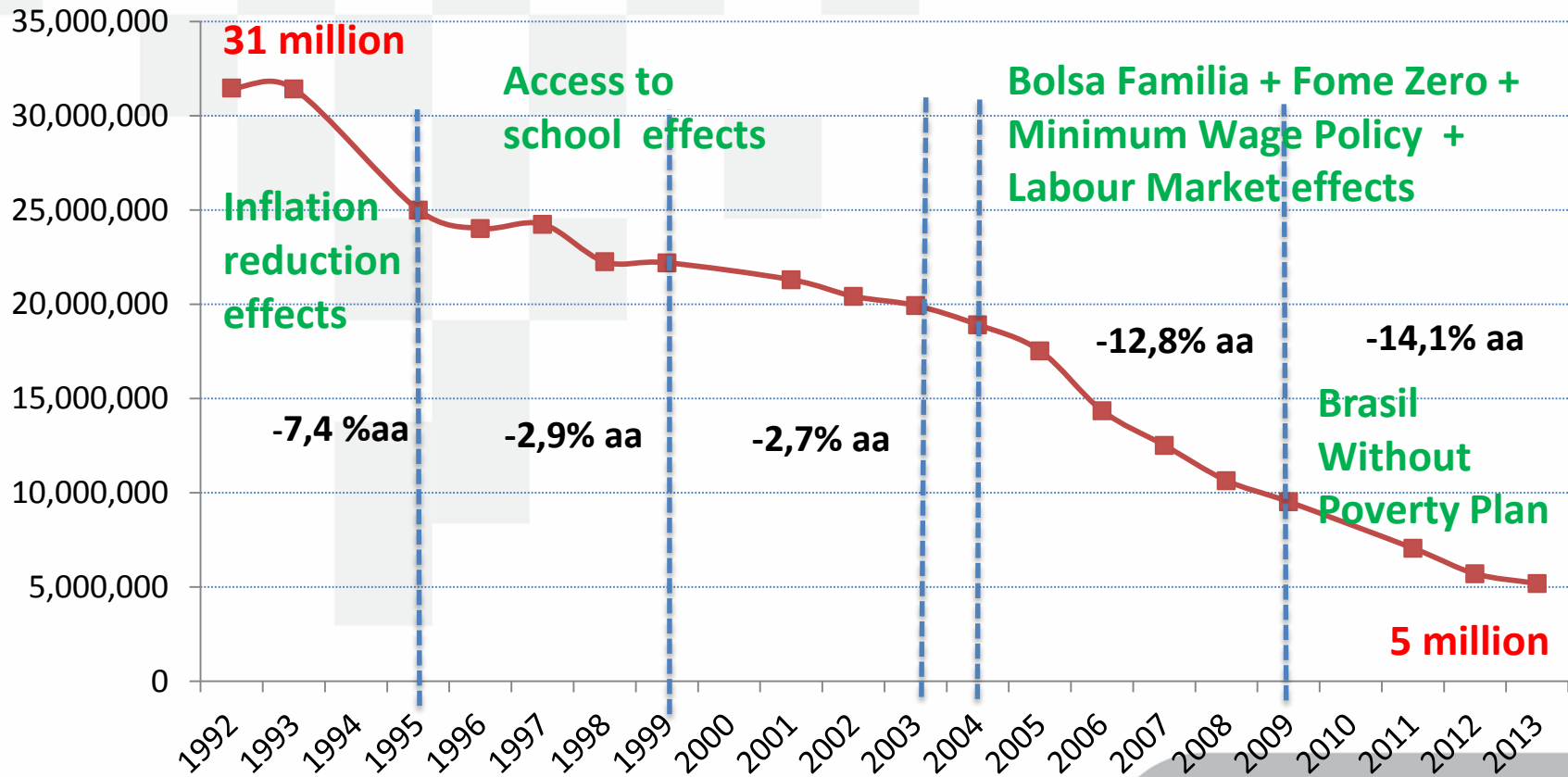
SAGI/MDS

Brasil has gone through intense social advance since the 1988 Constitution setting, specially under the 12 last years, in all regions and even more in the more vulnerable ones, as reported by UNDP, FAO and WB

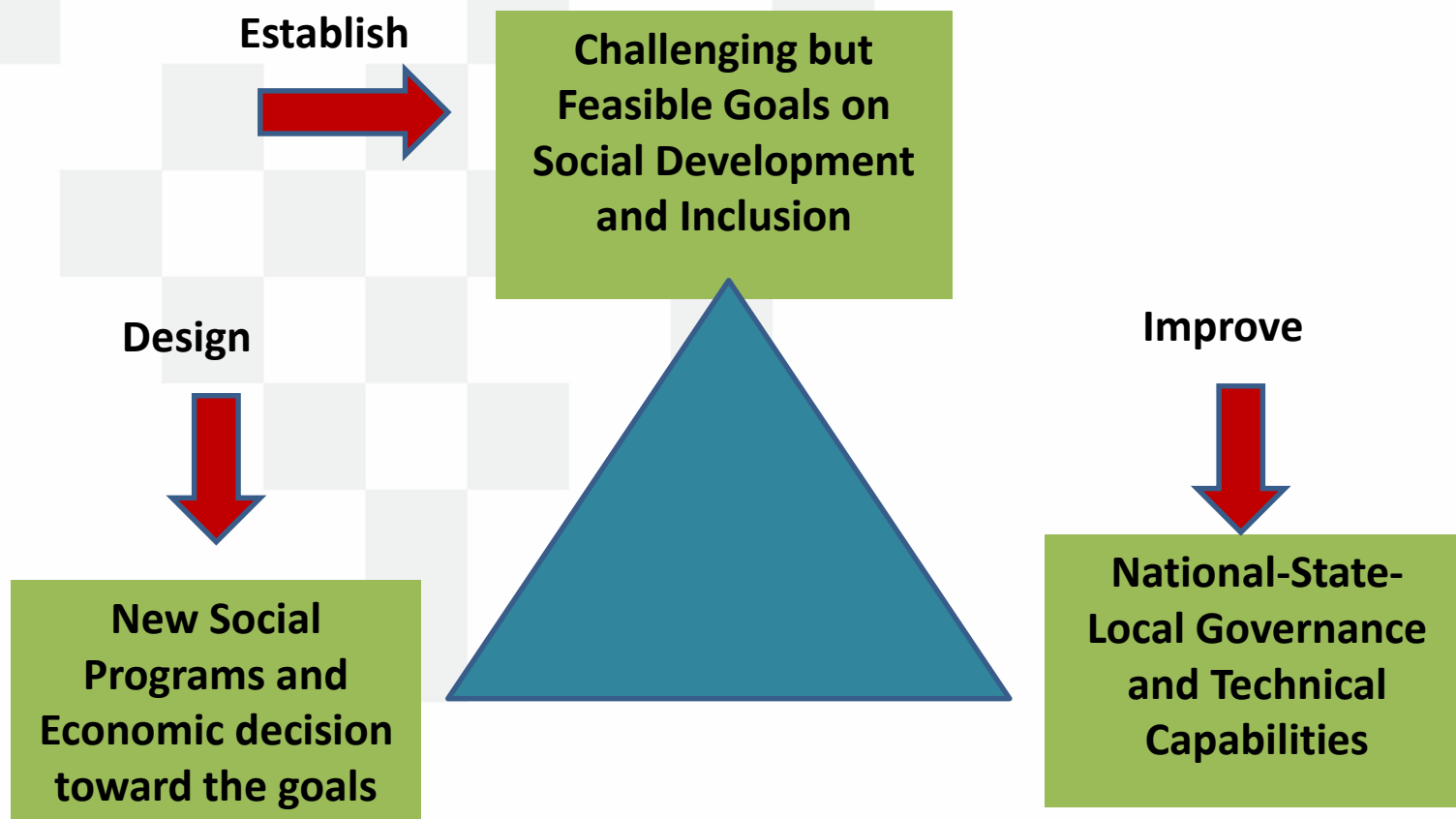
- The social improvement can be shown by a suite of indicators (like MDGs) or by a Multidimensional Index (built by crossing monetary poverty and social rights)



The declining and even accelerated trends were not “natural”, but conquered by well-set and well-informed policies during the period

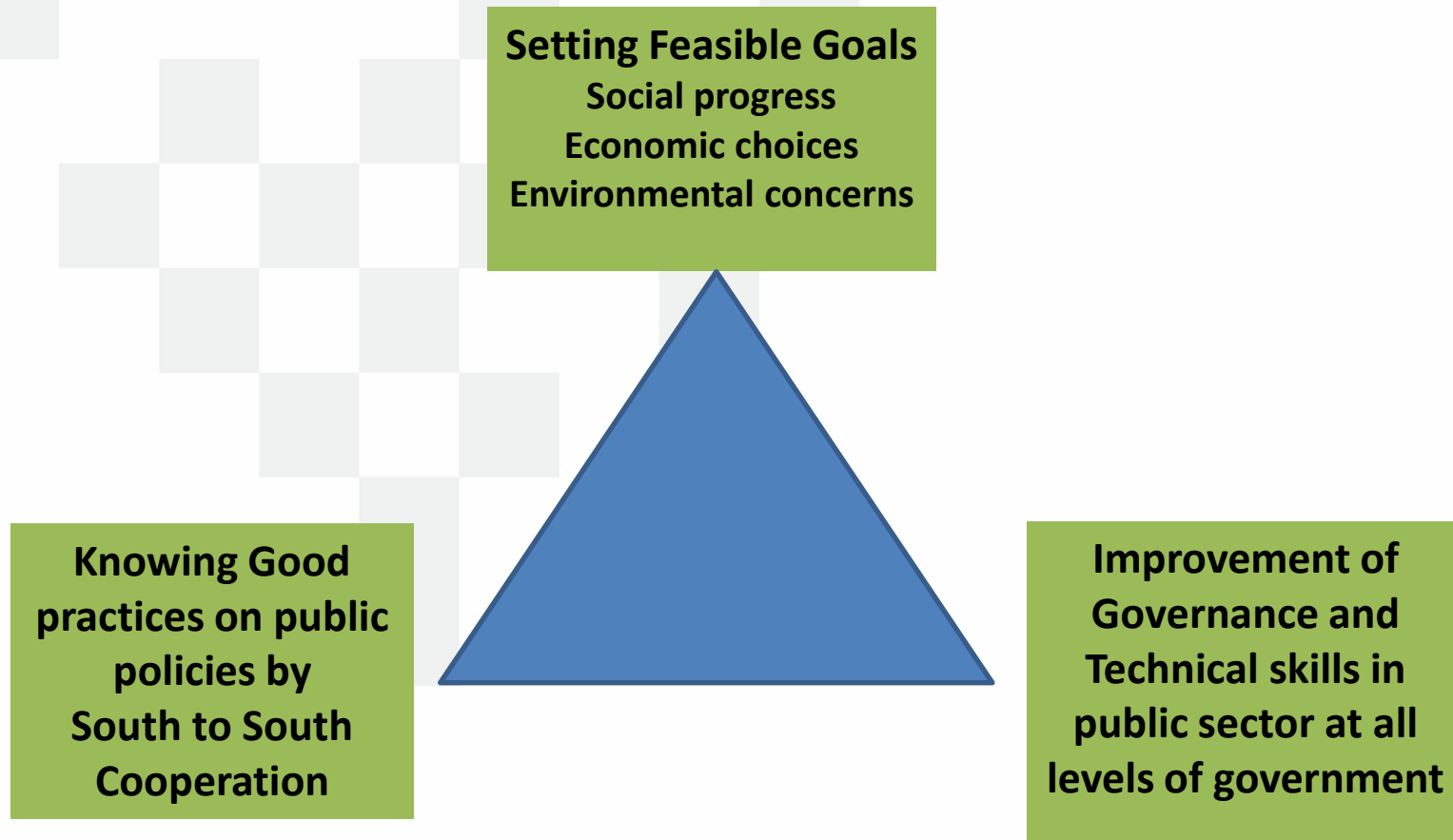


How was possible to keep reducing multidimensional poverty and even accelerating its fall during 24 years ?



How does it apply to SDGs agenda ?

Not letting it be an indicator monitoring agenda, but a platform to guide the selection of feasible goals, good practices on public policies and improvement on policy governance and public technical skills



How Monitoring and Evaluation Capacities and Bangkok Declaration can help this broader agenda ?

- **Taking a large definition of Evaluation : information and knowledge to design, monitor and evaluate policies and programs**
- **Considering that information and knowledge on Evaluation should be taken to all levels of government, because everyone plays a role on program improvement**
- **Helping to build an inventory of documents on well succeeded public policies and programs around the world**
- **Helping to build capabilities to produced statistical data and national registers around the world**

Thanks !!

www.mds.gov.br/sagi

aiad.sagi@mds.gov.br

BRASIL Acesso à Informação Participe Serviços Legislação Canais

Ir para o conteúdo 1 Ir para o menu 2 Ir para a busca 3 Ir para o rodapé 4

ACESSIBILIDADE ALTO CONTRASTE MAPA DO SITE

MINISTÉRIO DO

Desenvolvimento Social e Combate à Fome

Buscar no portal

Perguntas frequentes | SIC | Sistemas | Área de imprensa | Contato | Webmail | 0800 707 2003

VOCE ESTÁ AQUI: PÁGINA INICIAL > AVALIAÇÃO E GESTÃO DA INFORMAÇÃO

SAGI

Efetuar Login

Ache na SAGI

ACESSO RÁPIDO

Ferramentas
Informacionais

Dados e
Indicadores

Publicações e
Pesquisas

Ferramentas

SAGI LANÇA PORTAL DE PROGRAMAS DE DESENVOLVIMENTO SOCIAL

O objetivo é permitir o acesso a informações em um só local, facilitando a apropriação por pesquisadores, gestores e dirigentes, assim como o acompanhamento das políticas sociais pelos cidadãos.

Novidades

Programa / Serviço	Área Temática	Endereço Administrativo	Órgão Gestor	Ícones
Benefício de Prestação Continuada (BPC)	Regime especial de contribuição, assistência social	Palácio	Órgão Gestor: SDC/MS/MS	📄 📊 📑 📧
Bolsa Família (BF)	Transferências de renda	Palácio	Órgão Gestor: SDC/MS/MS	📄 📊 📑 📧
Bolsa Sem Miséria (BSM)	Controle de renda, inclusão produtiva e acesso a serviços	Palácio	Órgão Gestor: SDC/MS/MS	📄 📊 📑 📧
Cadastro Único para Programas Sociais do Governo Federal (CadÚnico)	Endereços para programas sociais	Palácio	Órgão Gestor: SDC/MS/MS	📄 📊 📑 📧